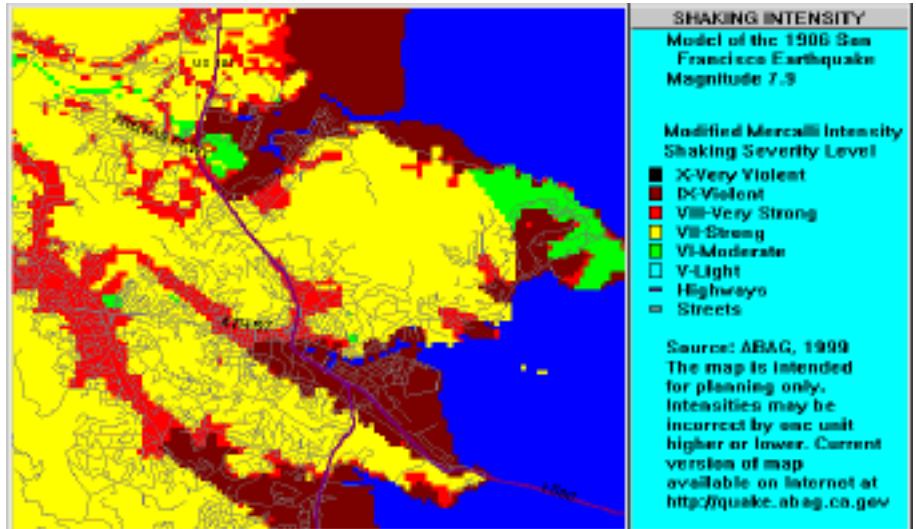
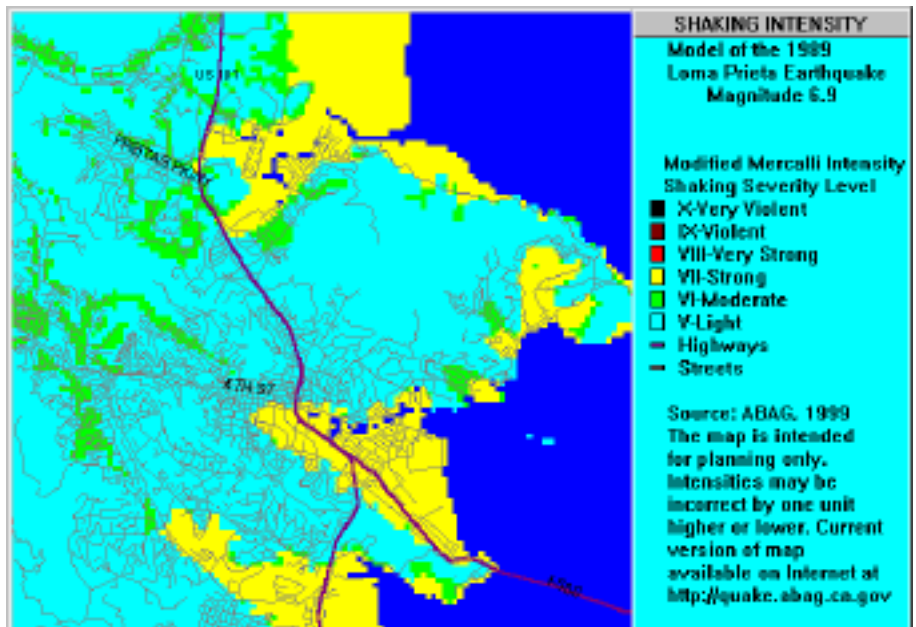


# Earthquake Hazard Maps for San Rafael

Scenario: 1906 San Francisco Earthquake



Scenario: 1989 Loma Prieta Earthquake



Scenario: Healdsburg-Rodgers Creek segment of the Hayward-Rodgers Creek Fault System.

The US Geological Survey reports that the overall probability of an earthquake of magnitude greater than or equal to 6.7 before the year 2030 involving:

- this fault segment is 20%
- this fault system is 32%

